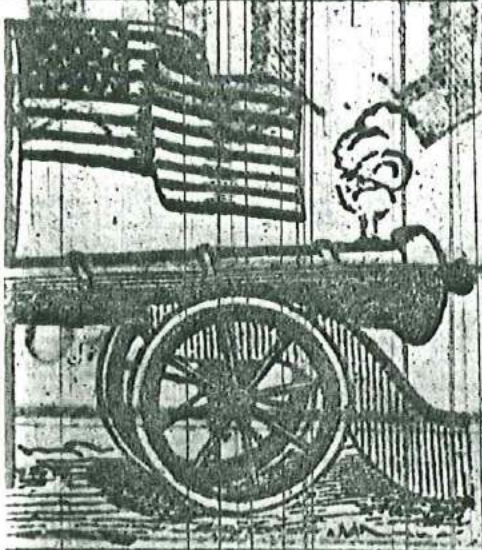


# The Mirror.

MAGAZINE, Editor



THE, MAY 13, 1865.

## NOTICE

Following is published for the all concerned.  
 North mail closes at 10 1/2 o'clock,  
 City mail at 11 1/2 o'clock A. M.  
 Ft Scott mail at 12 o'clock M.  
 and Western mail, every  
 12 o'clock, M.  
 are open from 7 A. M. to 6 1/2  
 ndays, from 11 A. M. to 2 P.

\$500—\$2500.

Three weeks ago Harry Johnson arrested in the city of Leavenworth. The Sheriff of that county on of having robbed a traveler of Duncan, near Chillicothe, county. Johnson waived an n and was admitted to bail in \$500, which sum he deposited Justice of the Peace, and then about thinking he had made a

## Obituary.

The numerous personal friends of J. W. Thompson, late of Company B, 10th K. V. V., will be pained to learn of his decease. He fell in the charge on the rebel works near Blakely, Ala., on the 9th of April. Mr. T. was formerly a member Company A of the old 10th, but not satisfied with devoting three years of his life in the service of his country, he enlisted into the veteran corps; he was a brave and gallant soldier and was one of the foremost in the gallant charge in which he lost his life. At the time of his enlistment he was a resident of Aubrey, in this county, where he has many friends who will mourn his loss.

## DIED

After a distressing and lingering illness, Miss, ELINA BECKWITH, at 2 o'clock A. M. on Sunday, April, 30.

Though for more than a year the victim of a cancer, her death does not seem to have been caused by that but by an affection of the stomach. She had been expecting death, and yet it came as usual in an unexpected way. She had done her work for she did literally "what she could" and the wish of her last audible utterance twenty-four hours before death "I want to go home," has been granted. Though for a long time an extreme and constant sufferer, her resignation never failed her nor was her faith obscured, and it is a source of satisfaction to feel so well assured that she is now "where the wicked cease from troubling and the weary are at rest."

## Hints to Teachers

FRIEND MIRROR.—Permit me to offer the following suggestions for the use of our county, some of which are quoted from the Kansas Journal which, by the way, is in the hands of every teacher in the county:

- 1st. Be at the school fifteen minutes before 9 o'clock.
  - 2d. Keep the room in a clean and well swept every day.
  - 3d. " Pupils should be taught to enter and leave the house in a proper and orderly manner.
  - 4th. " Allow no eating or drinking of gum " or anything else, in the school room.
  - 5th. " It is not well to create trouble by announcing a 'disappointment' in a common school.
  - 6th. Talk but little, but say what you say; and say it in a pleasant tone. No brawling will do any good.
  - 7th. Be always pleasant and kind to pupils.
  - 8th. " Give short lessons and require them to be learned.
  - 9th. " The common fault is in reading too fast; speaking too indistinctly; and in not drilling much on emphasis.
  - 10th. In spelling classes require the pupil to tell the sound of every vowel, every time the sound is used in the lesson, giving a certain standard of each sound. For example, the 2d sound of o as in nor.
- Have the children sing at the beginning and at the afternoon close